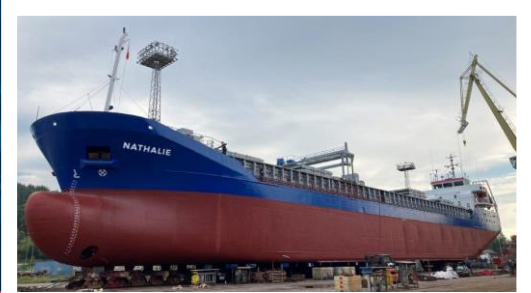


m/v

NATHALIE

GENERAL CARGO CARRIER

nathalie@rabn.fi | +358 401 899 413 | +88 16 777 32374



Particulars

Name:	mv NATHALIE
Call sign:	OJUE
IMO Nr:	9259068
Flag:	Finland
Home port:	Mariehamn
Built:	2003
Builder:	Peters Scheepswerf, Kampen
Class:	Lloyds register 100A1
Ice Class:	Finnish / Swedish 1B
P&I:	Gard

Measurements

GT:	3164
NT:	1680
DWT:	5019
DWCC:	4800 / 4650

Main dimensions

LOA:	95,32 m
Breadth:	13,35 m
Mld Depth:	7,40 m
Draught:	5,714 m
Air draught:	25,5 m
Waterline to hatch:	abt. 6,6 m (in ballast conditions)

Cargo hold

Hold 1:	25,00 x 11,20 x 8,70 m
Hold 2:	37,50 x 11,20 x 8,70 m
Grain:	6116 m ³ / 216'000 cuf
Tank top:	15 t/m ²
Hatch:	1,6 t/m ²
Bulkheads:	1

Propulsion

Main Engine:	Wärtsilä 6L26A
ME Output:	1950 kW
Bowthruster:	Yes, 250 kW
Speed:	10,5 kn

All measurements in meters, not necessarily in scale. All details believed to be correct, but w.o.g.

